



UNIVERSITY of the
WESTERN CAPE

Molecular Insight into the Interaction between the Spike Protein of the Wildtype, Delta and Omicron SARS-CoV-2 and the Human Angiotensin Converting Enzyme 2 (hACE2): Potential for the Design of Fusion Inhibitors

Dr Samuel Ayodele Egieyeh

Pharmacology and Clinical Pharmacy

School of Pharmacy,

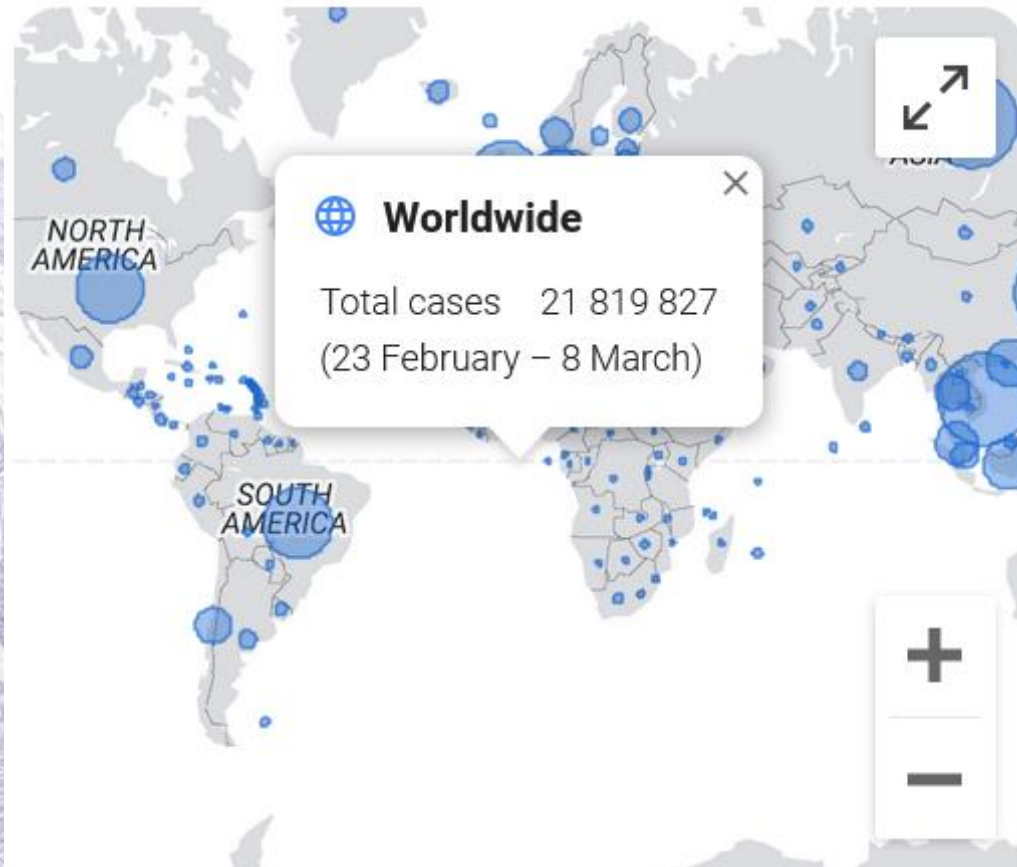
University of the Western Cape

Bellville 7535 Cape Town

segieyeh@uwc.ac.za

COVID-19 Global Statistics

Covid-19 is the infectious disease caused by the most recently discovered coronavirus (SARS-CoV-2).



 Worldwide

Total cases

450M

+1,85M

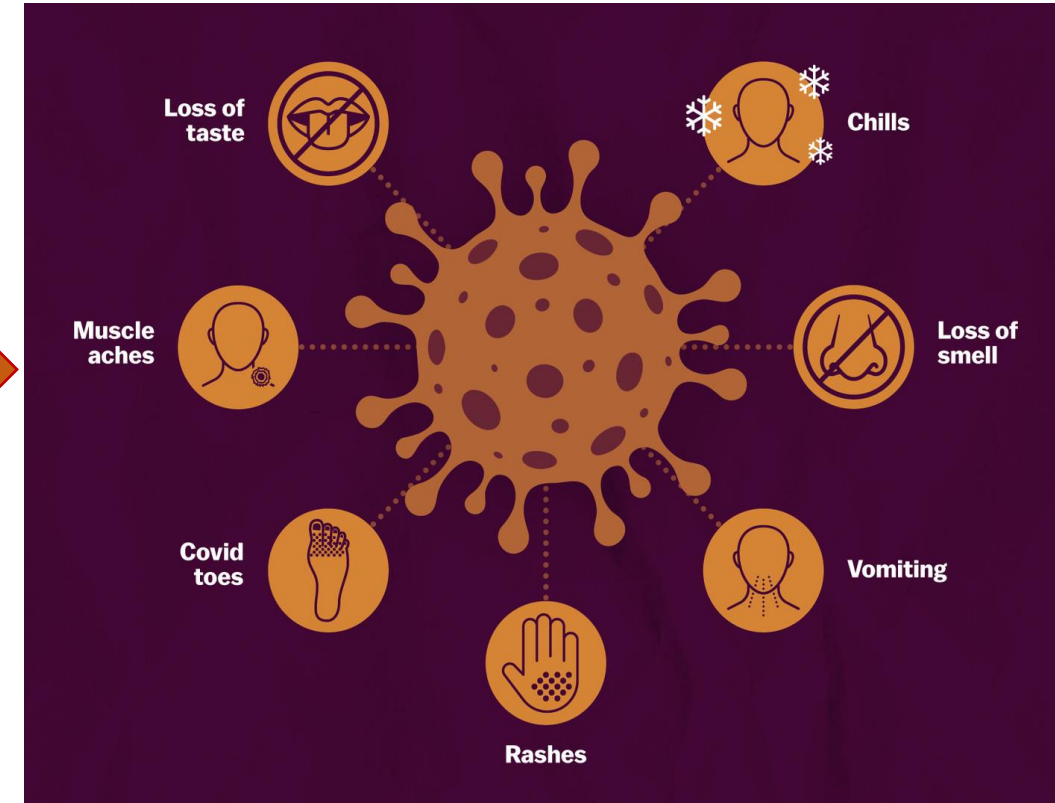
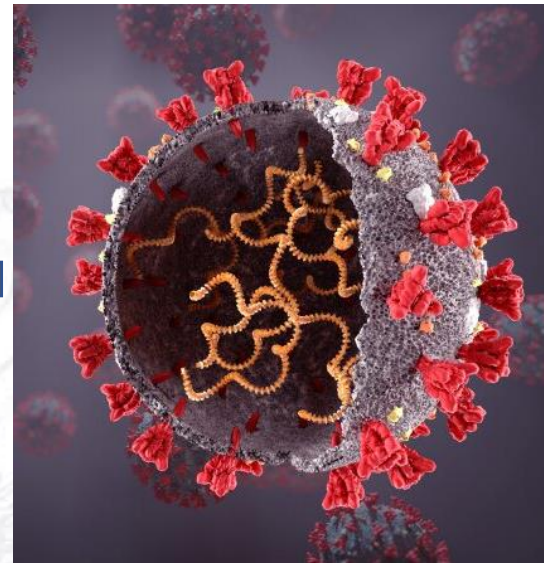
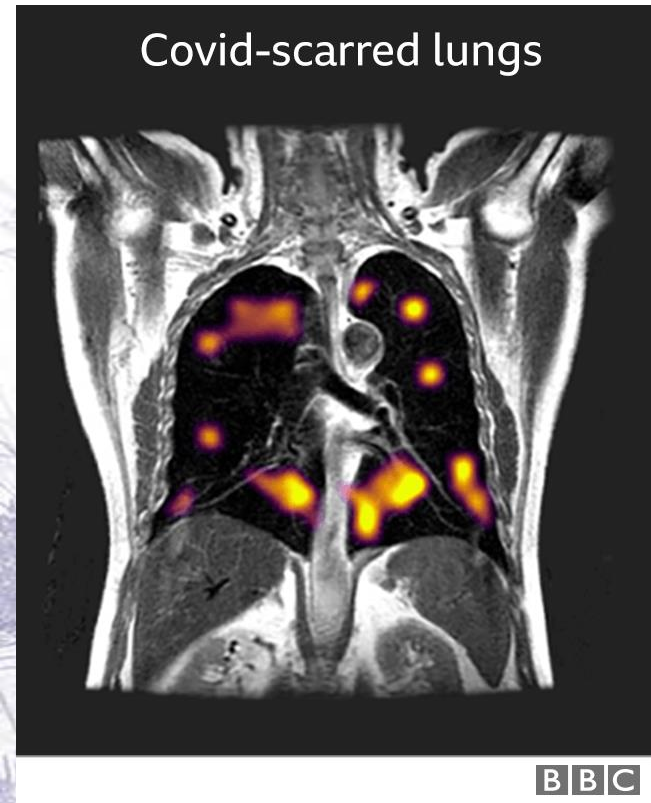
Deaths

6,01M

+7 373

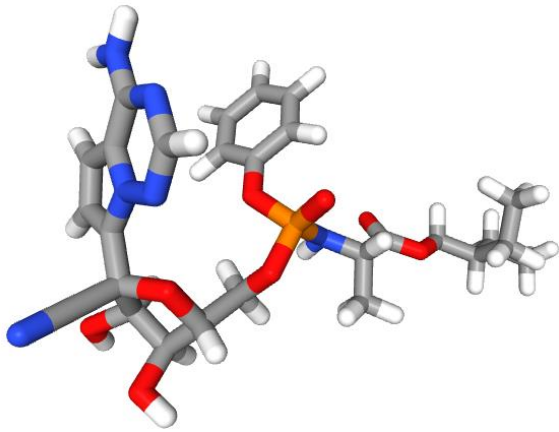
SARS-CoV2 and COVID-19

- Signs and Symptoms

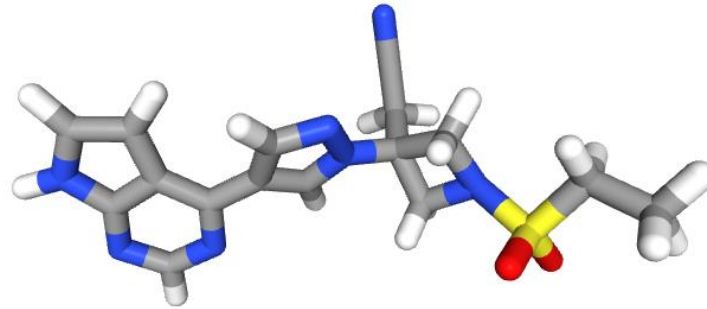


Vaccines and Drugs for Covid-19

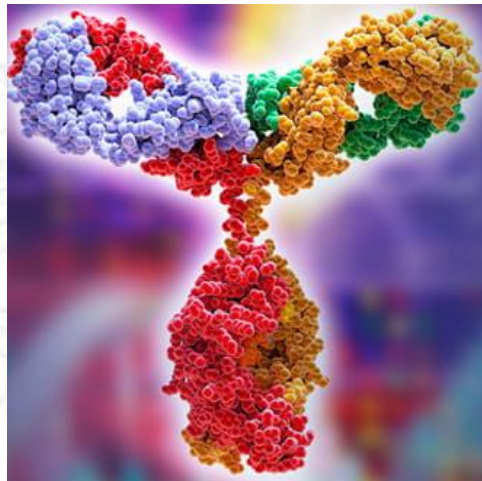
There is a global effort from academic and non-academic groups to evaluate and develop an effective treatment for COVID-19.



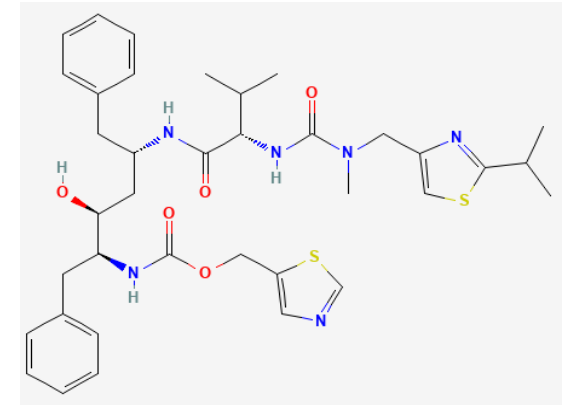
Remdesivir (an antiviral nucleotide analogue)



Baricitinib (Interleukin-6 receptor blockers)



Bebtelovimab works by binding to the spike protein



PAXLOVID™ (PF-07321332; ritonavir)

[Johnson & Johnson vaccine](#)
[Oxford, AstraZeneca vaccine](#)
[Sinopharm BBIBP vaccine](#)

[BioNTech, Pfizer vaccine](#)
[CoronaVac vaccine](#)

Our Humble Contribution



PLOS ONE

OPEN ACCESS PEER-REVIEWED

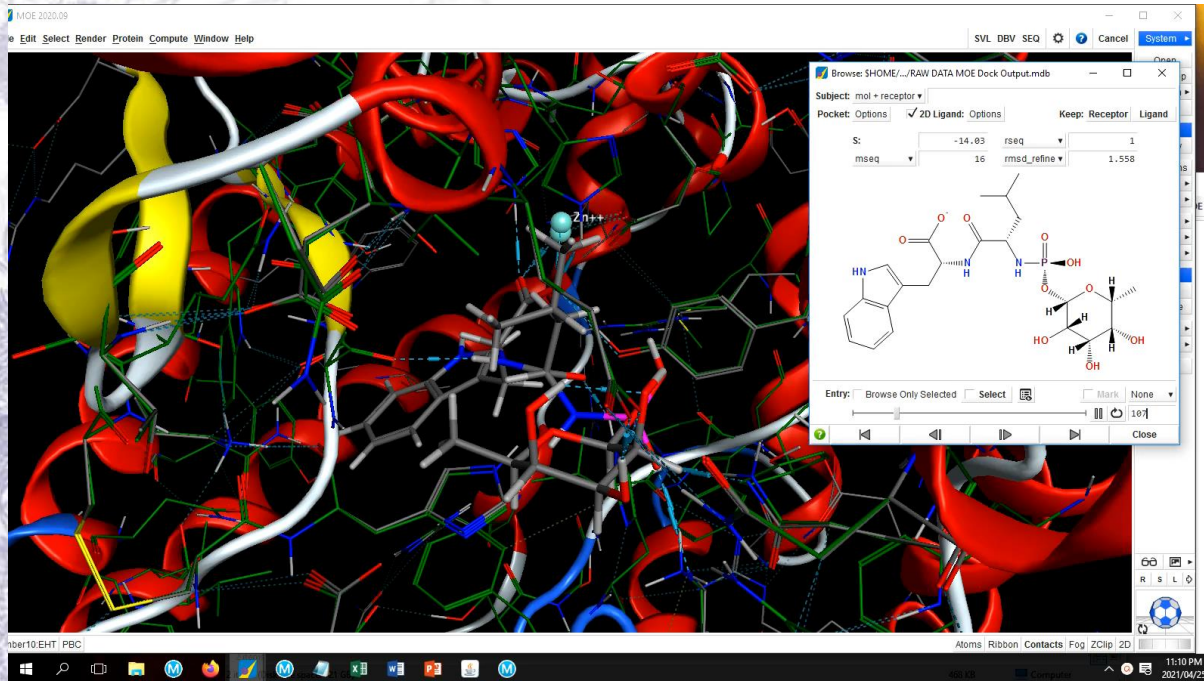
RESEARCH ARTICLE

Computational drug repurposing strategy predicted peptide-based drugs that can potentially inhibit the interaction of SARS-CoV-2 spike protein with its target (humanACE2)

Samuel Egieyeh , Elizabeth Egieyeh , Sarel Malan , Alan Christofells , Burtram Fielding

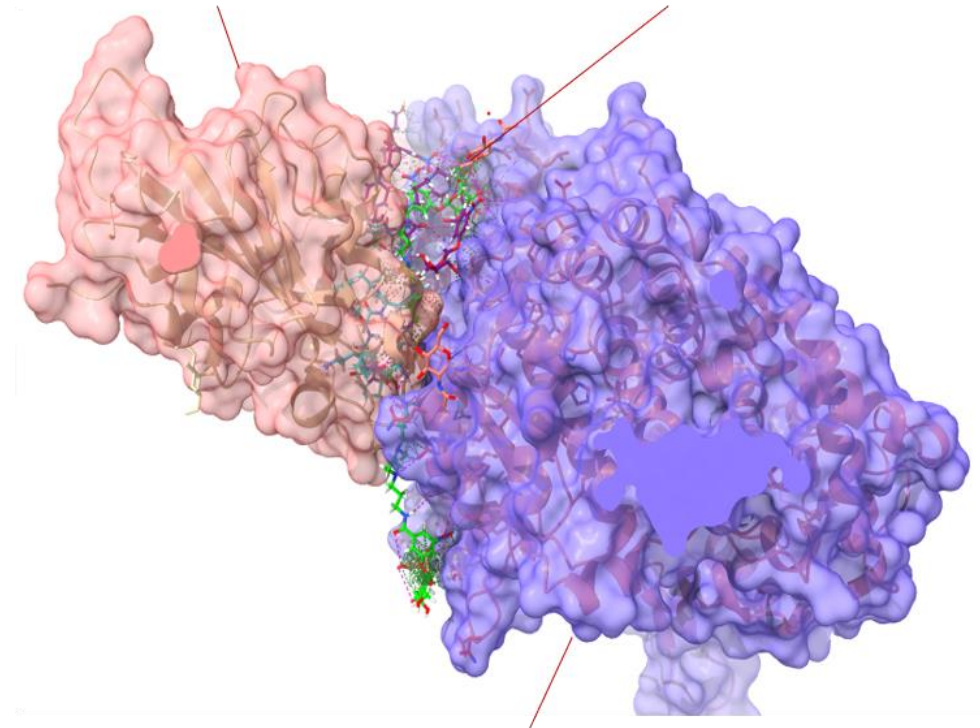
Computational Drug Repurposing Strategy

- There is a global effort from academic and non-academic groups to evaluate and develop an effective treatment for COVID-19.



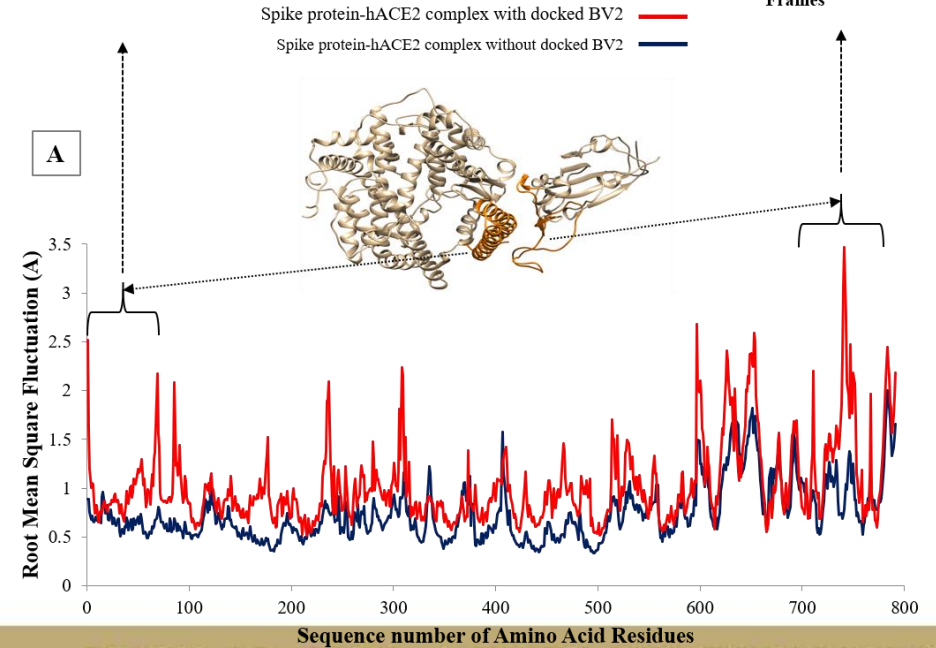
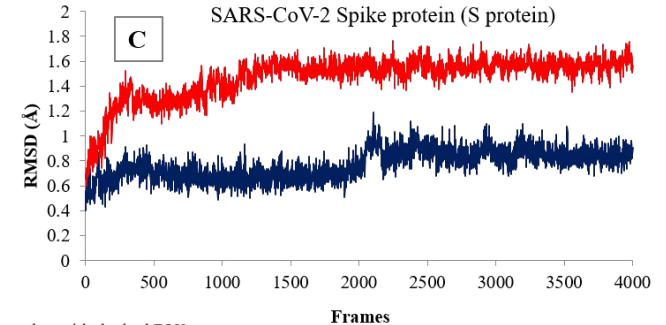
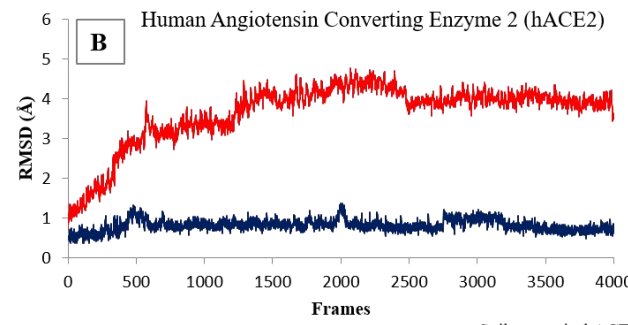
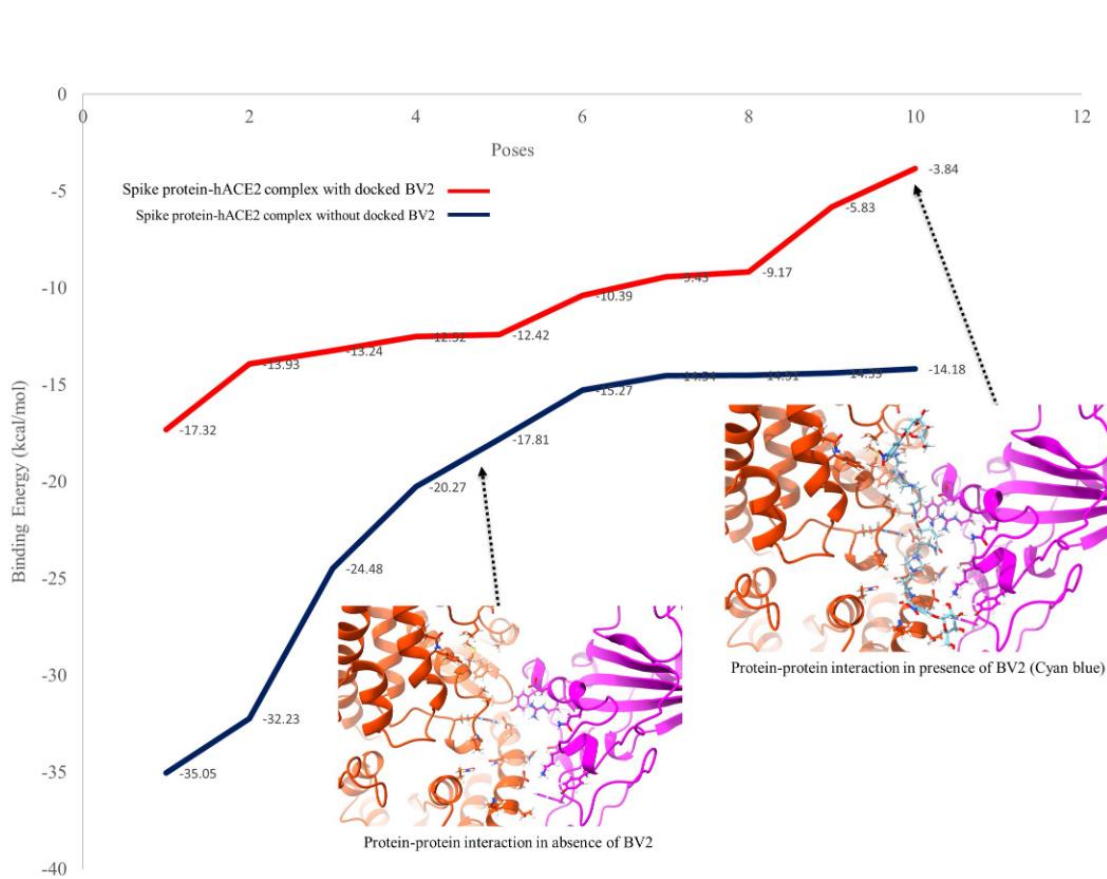
Angiotensin Converting Enzyme 2 Receptor (hACE2)

Poses of BV2



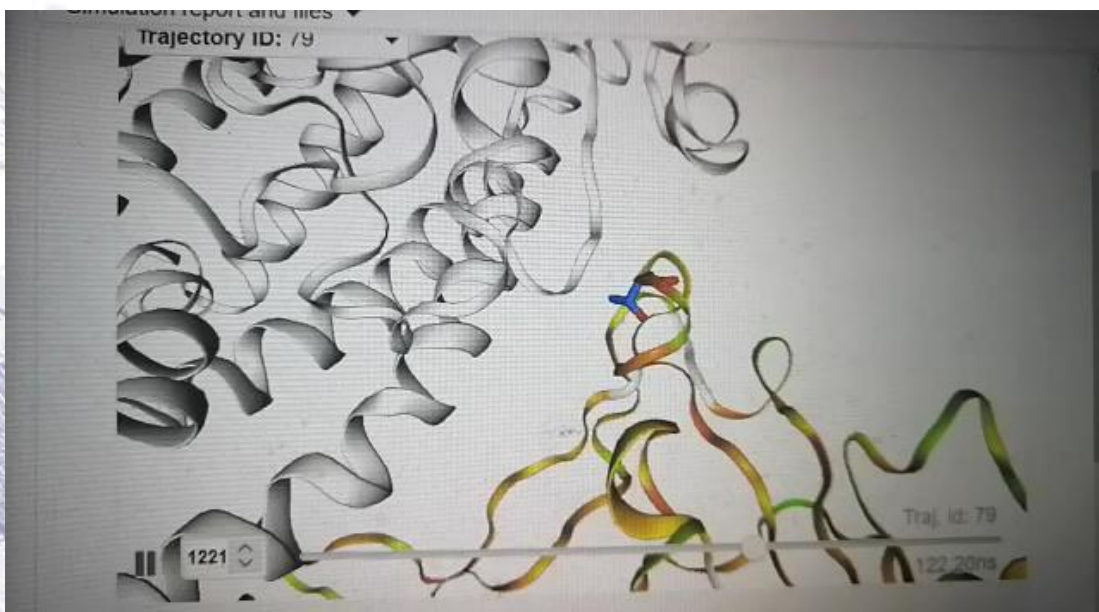
Human Angiotensin Converting Enzyme 2 Receptor (hACE2)

Computational Drug Repurposing Strategy



Accounting for mutations

SCoV2-MD: a database for the dynamics of the SARS-CoV-2 proteome and variant impact predictions



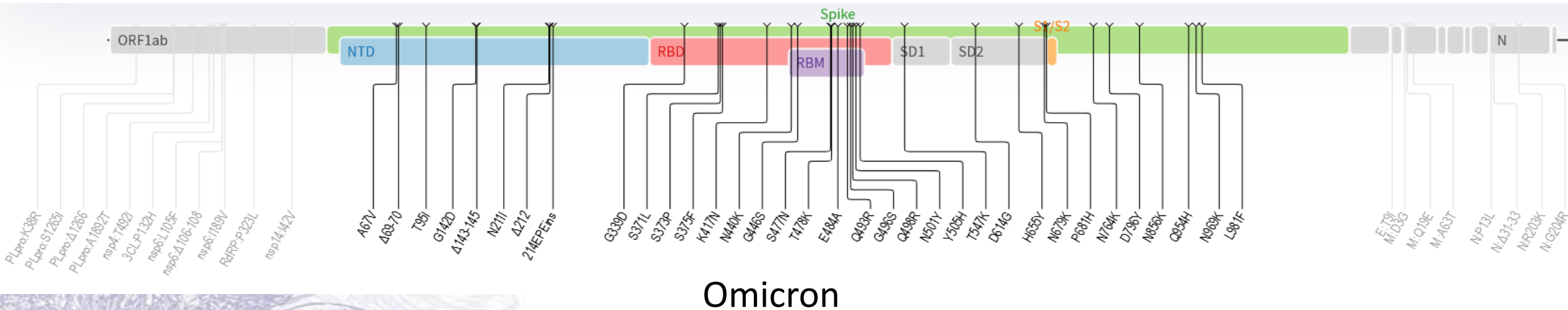
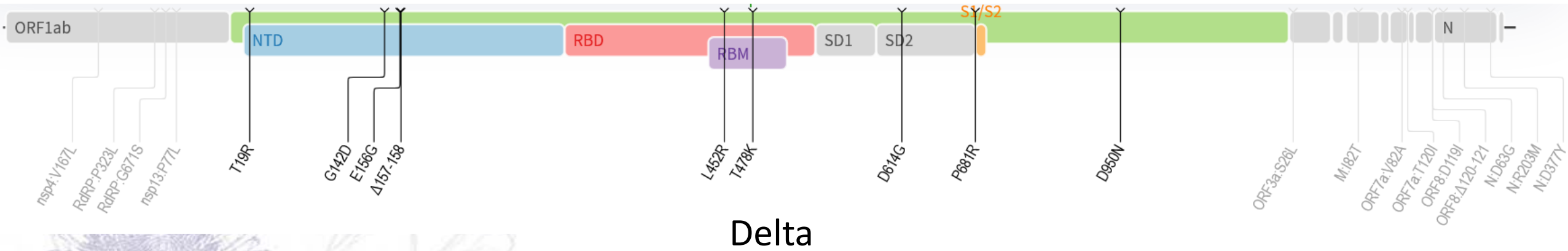
The mutations in S protein could have profound impacts on diagnostic detection, antiviral immunity, and virus infectivity

RMSD	0.0702	RMSD	0.145
RMSF	0.0426	RMSF	0.102
SASA	0.0255	SASA	0.505
CHI1	1.002	CHI1	-0.0158
All contacts	5.004	All contacts	5.038
Hydrogen bond contacts	2.135	Hydrogen bond contacts	2.102
Salt bridge contacts	0	Salt bridge contacts	0
N501Y		K417N	

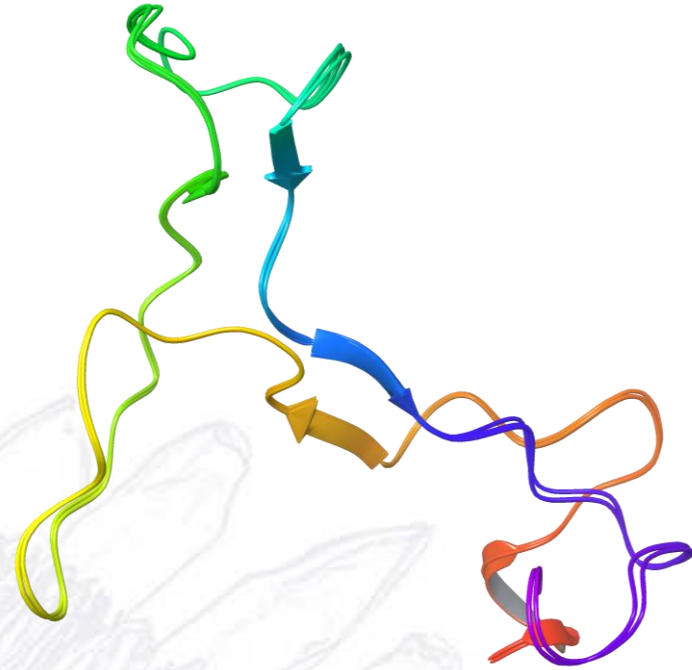
Objectives

- Predict effect of mutations on dynamics of the interaction of the receptor binding motif of the spike protein with its host receptor (hACE2)
- Characterize the wildtype and variant forms of the receptor binding motif of the Spike protein
- Generate pharmacophore model for the wildtype and variant forms of the receptor binding motif of the Spike protein
- Use the pharmacophore model to screen a natural product database

Mutations in Delta and Omicron variants



Modelling and superimposition of receptor binding motif of wildtype, Delta and Omicron variants of SARS CoV-2 spike protein

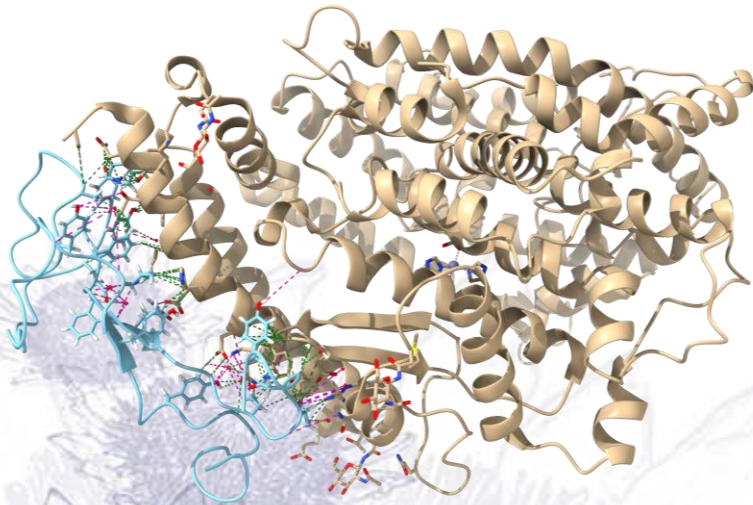


	Wildtype RBM	Delta RBM	Omicron RBM
Wildtype RBM	0	0.09	0.16
Delta RBM	0.09	0	0.21
Omicron RBM	0.16	0.21	0

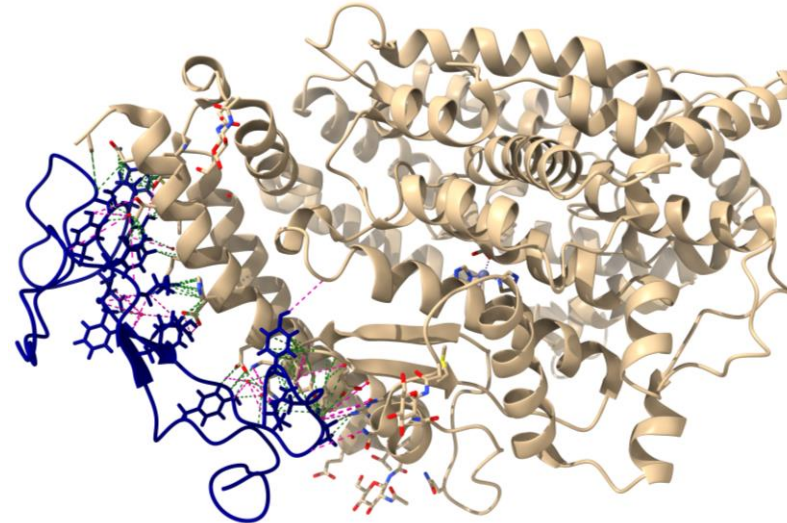
	10	20	30	40																																						
Wildtype RBM	S	N	N	L	D	S	K	V	G	G	N	Y	N	Y	L	Y	R	L	F	R	K	S	N	L	K	P	F	E	R	D	I	S	T	E	I	Y	Q	A	G	S	T	P
Delta RBM	S	N	K	L	D	S	K	V	S	G	N	Y	N	Y	L	Y	R	L	F	R	K	S	N	L	K	P	F	E	R	D	I	S	T	E	I	Y	Q	A	G	N	K	P
Omicron RBM	S	N	N	L	D	S	K	V	G	G	N	Y	N	Y	R	Y	R	L	F	R	K	S	N	L	K	P	F	E	R	D	I	S	T	E	I	Y	Q	A	G	S	K	P
	50	60																																								
Wildtype RBM	C	N	G	V	E	G	F	N	C	Y	F	P	L	Q	S	Y	G	F	Q	P	T	N	G	V	G	Y	Q															
Delta RBM	C	N	G	V	A	G	F	N	C	Y	F	P	L	R	S	Y	S	F	R	P	T	Y	G	V	G	H	Q															
Omicron RBM	C	N	G	V	E	G	F	N	C	Y	F	P	L	Q	S	Y	G	F	Q	P	T	N	G	V	G	Y	Q															

Dynamics of the interaction

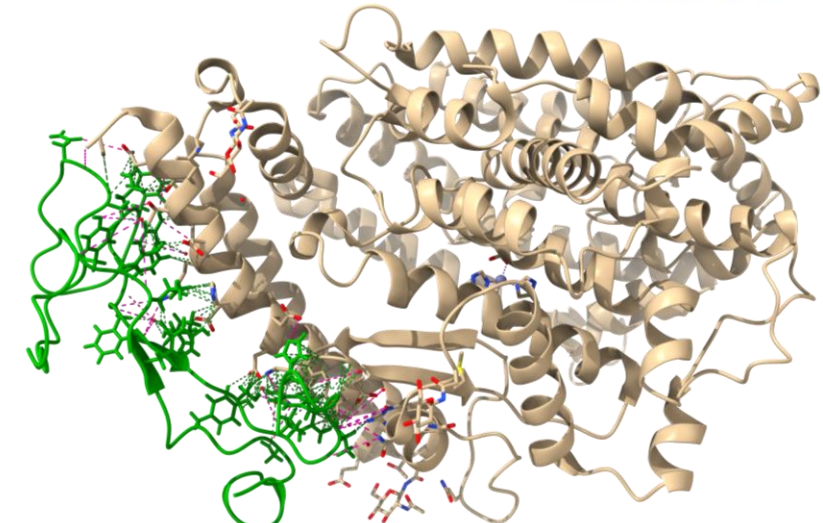
Residue Interaction with ChimeraX 1.2.4



Wildtype RBM: 35 Hbond, 118 VDW



Delta RBM 41 Hbond, 119 VDW

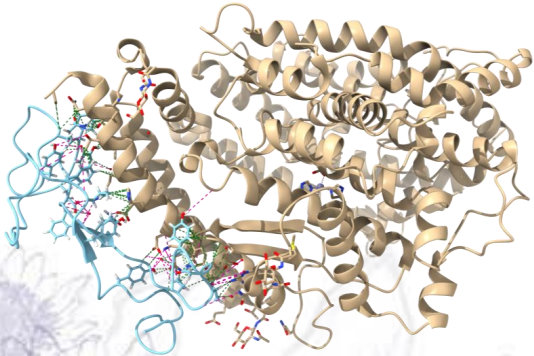


Omicron RBM 36 Hbond, 192 VDW

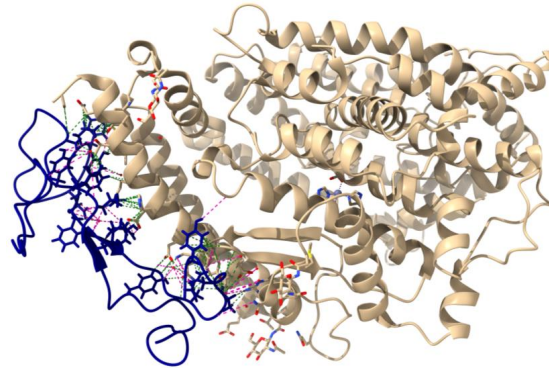
Protein-protein complex	ΔG (kcal mol ⁻¹)
wildtypeRBD-hACE2	-12.6
deltaRBD-hACE2	-12.7
OmicronRBD-hACE2	-11.8

Prediction of protein-protein binding affinity implemented in PRODIGY (PROtein binDing enerGY prediction) web server

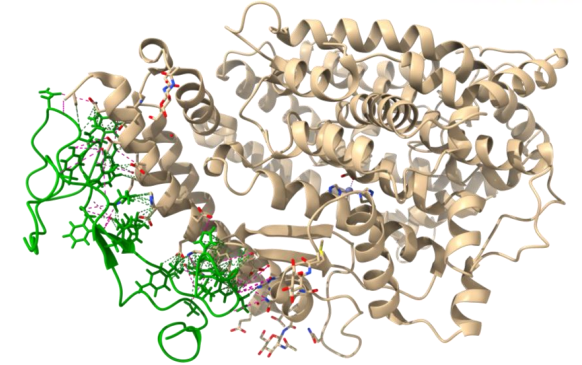
Dynamics of the interaction



Wildtype RBM: 35 Hbond, 118 VDW



Delta RBM 41 Hbond, 119 VDW



Omicron RBM 36 Hbond, 192 VDW

Number of Interfacial Contacts (ICs) per property:

ICs charged-charged:	3
ICs charged-polar:	10
ICs charged-apolar:	19
ICs polar-polar:	5
ICs polar-apolar:	24
ICs apolar-apolar:	10

Non Interacting Surface (NIS) per property:

NIS charged:	25.52%
NIS apolar:	34.55%

Number of Interfacial Contacts (ICs) per property:

ICs charged-charged:	3
ICs charged-polar:	10
ICs charged-apolar:	20
ICs polar-polar:	5
ICs polar-apolar:	24
ICs apolar-apolar:	11

Non Interacting Surface (NIS) per property:

NIS charged:	25.91%
NIS apolar:	34.43%

Prediction details

Number of Interfacial Contacts (ICs) per property:

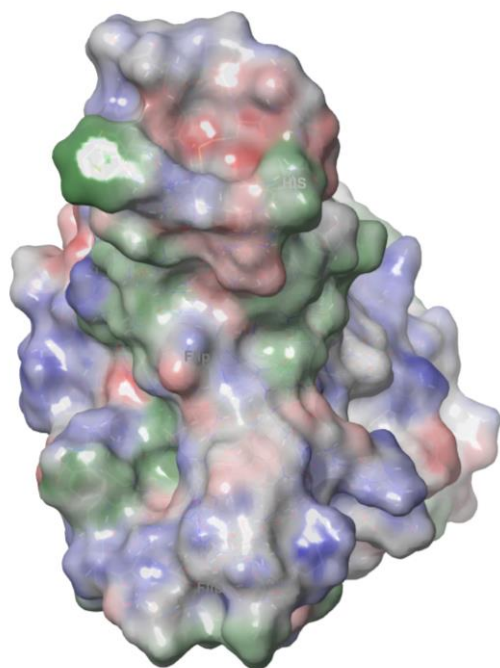
ICs charged-charged:	7
ICs charged-polar:	7
ICs charged-apolar:	19
ICs polar-polar:	6
ICs polar-apolar:	20
ICs apolar-apolar:	10

Non Interacting Surface (NIS) per property:

NIS charged:	25.96%
NIS apolar:	34.84%

Patch surface analysis

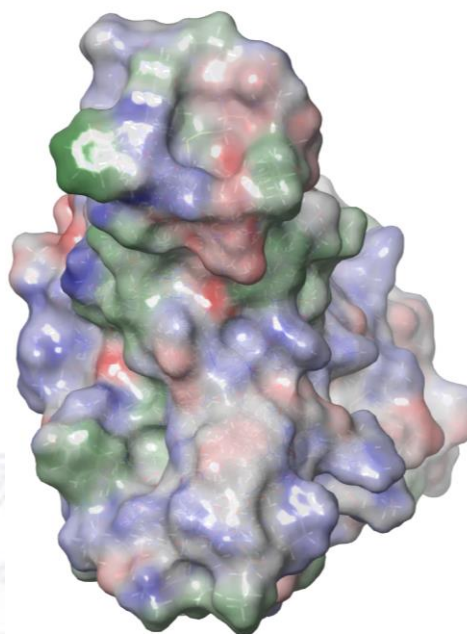
Implemented in Maestro (Schrodinger)



General Protein Properties

Sum positive surface area: 5122.35Å²
Sum negative surface area: 3330.31Å²
Sum donor surface area: 1776.44Å²
Sum acceptor surface area: 2082.44Å²

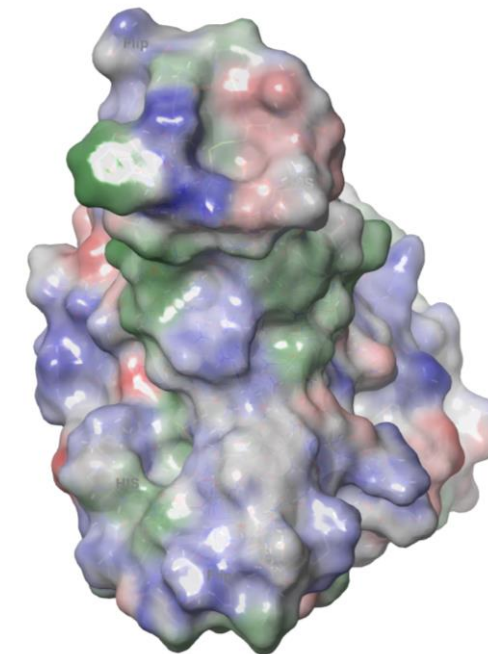
Wildtype RBM



General Protein Properties

Sum positive surface area: 5159.46Å²
Sum negative surface area: 3303.42Å²
Sum donor surface area: 1834.39Å²
Sum acceptor surface area: 2042.50Å²

Delta RBM



General Protein Properties

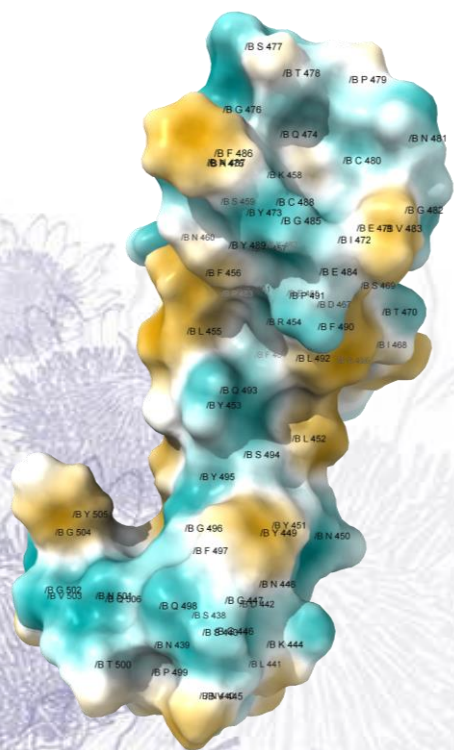
Sum positive surface area: 5196.19Å²
Sum negative surface area: 3284.03Å²
Sum donor surface area: 1780.62Å²
Sum acceptor surface area: 1992.48Å²

Omicron RBM

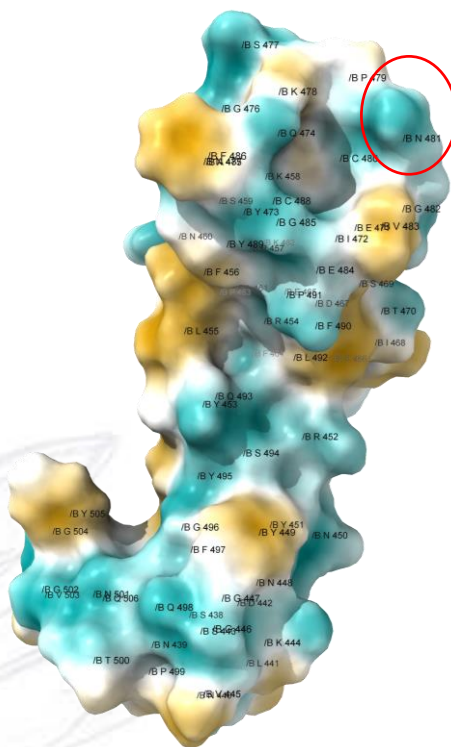


Molecular lipophilicity potential (MLP) maps

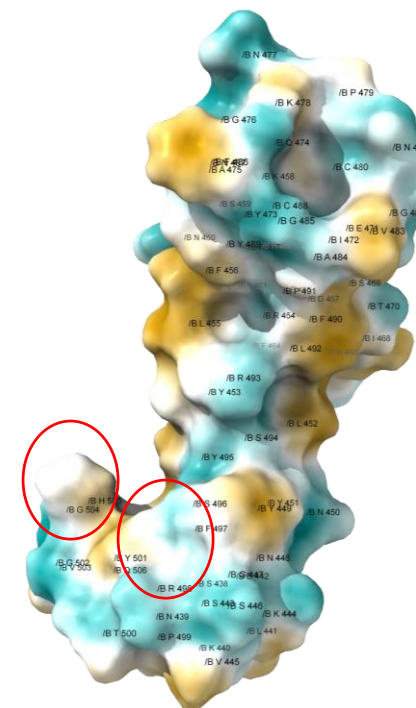
dark cyan (most hydrophilic) to white to dark goldenrod (most lipophilic)



Wildtype RBM:
minimum -25.18,
mean -2.864,
maximum 23.38



Delta RBM:
minimum -25.32,
mean -3.015,
maximum 23.22

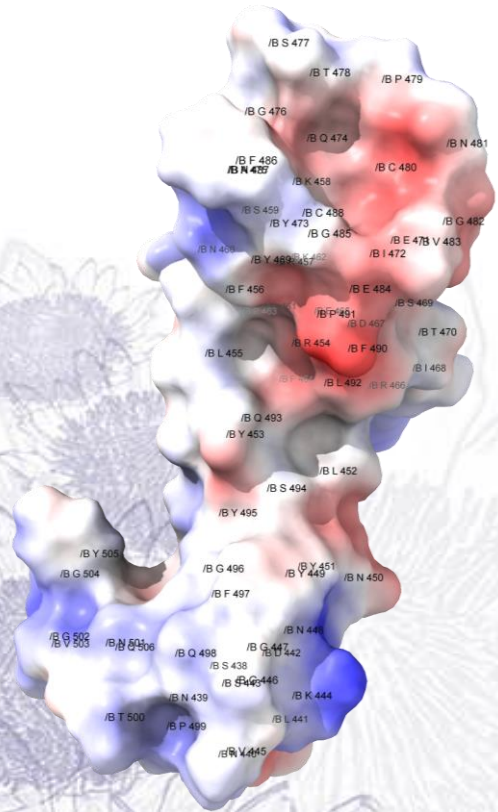


Omicron RBM:
minimum -25.45,
mean -2.545,
maximum 24.04

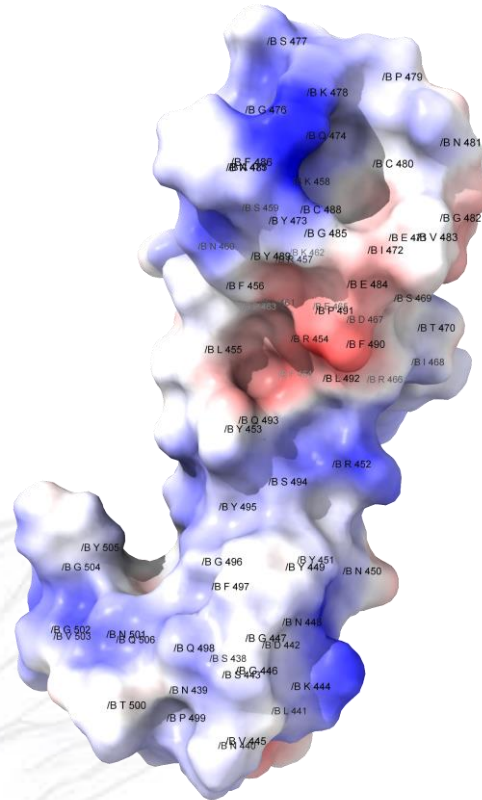
Coulombic electrostatic potential



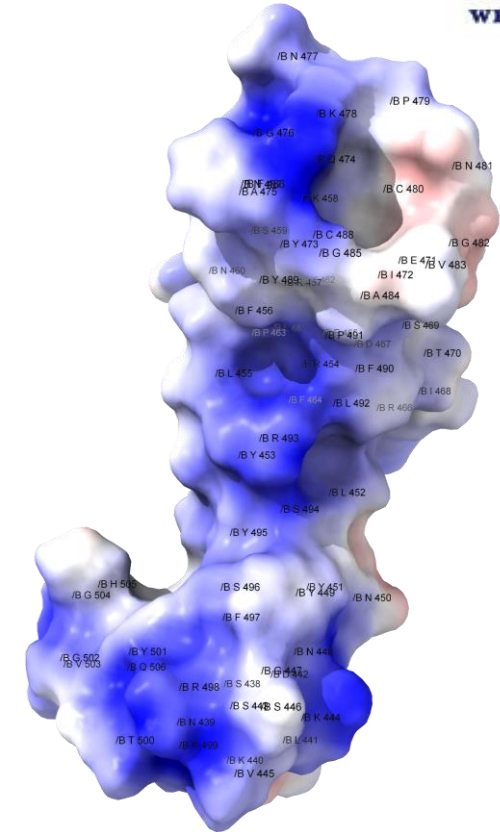
UNIVERSITY of the
WESTERN CAPE



Wildtype RBM:
minimum, -9.15,
mean **0.69**,
maximum 9.73

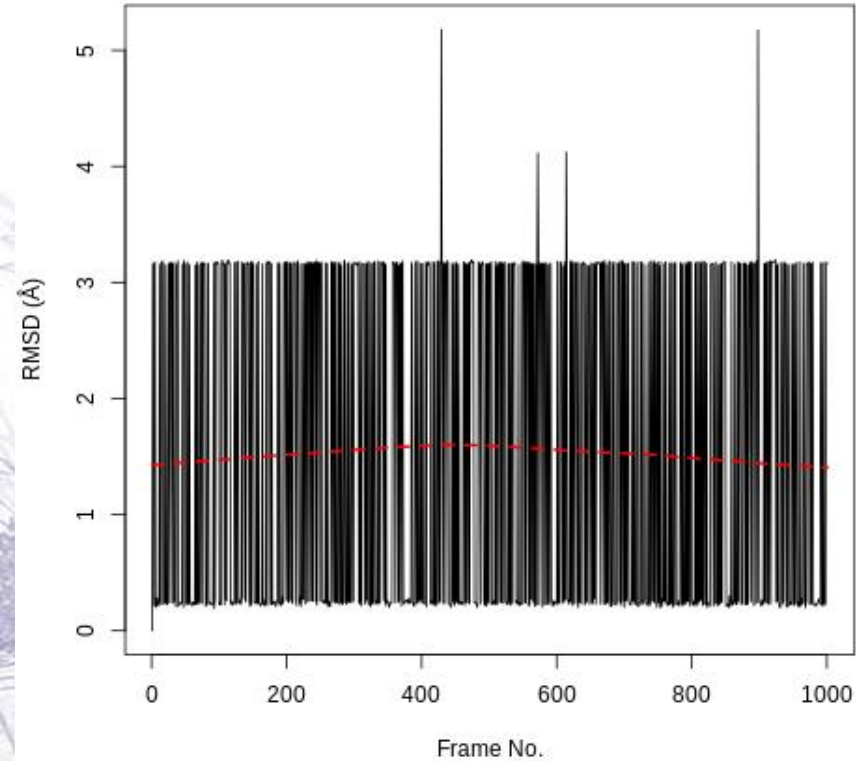


Delta RBM:
minimum, -8.51,
mean **1.64**,
maximum 10.35

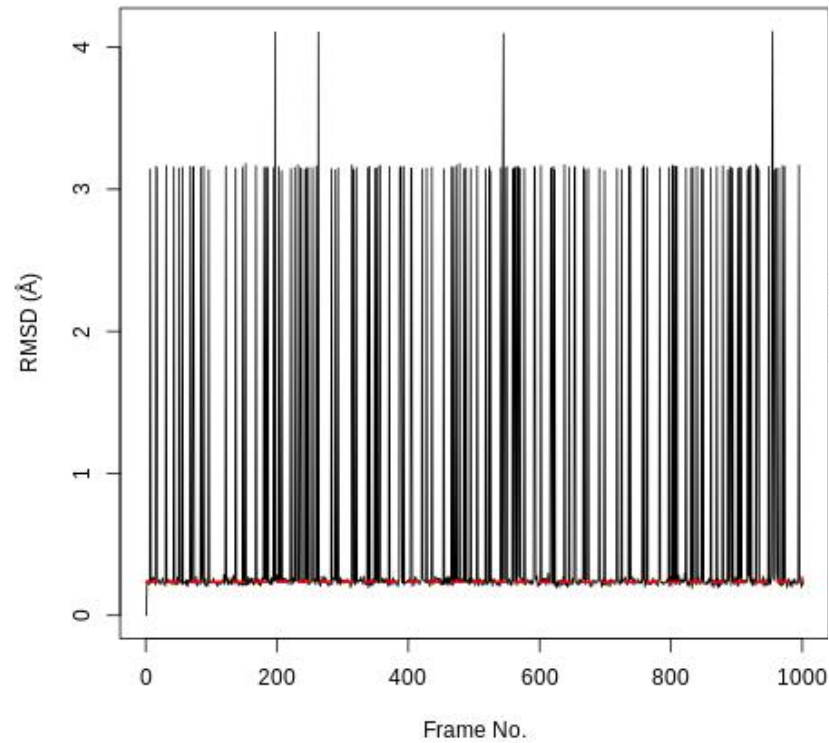


Omicron RBM:
minimum, -5.58,
mean **3.02**,
maximum 13.16

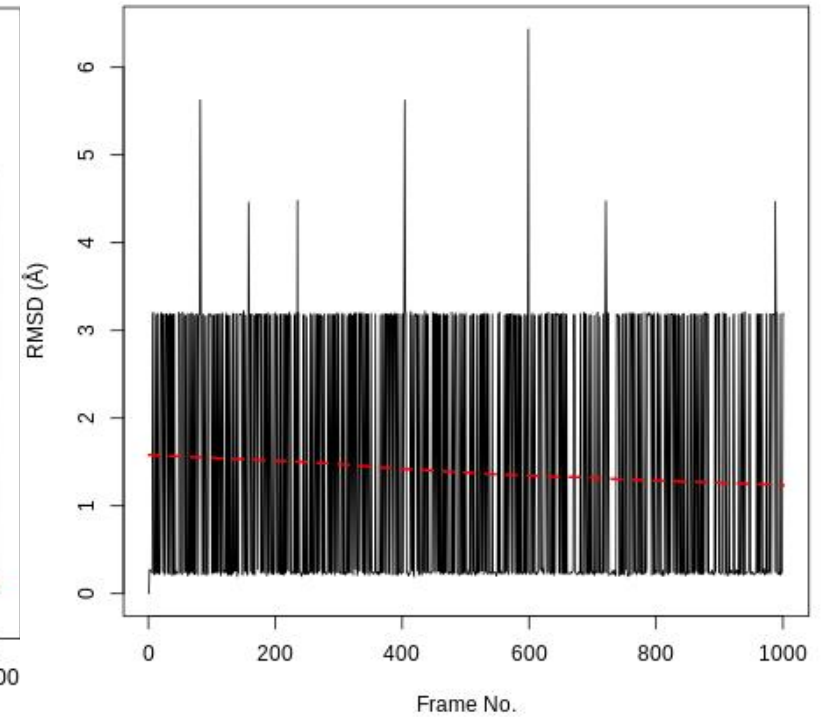
Molecular Dynamics of the receptor binding motif of wildtype, Delta and Omicron variants of SARS CoV-2 spike protein



Wildtype RBM



Delta RBM

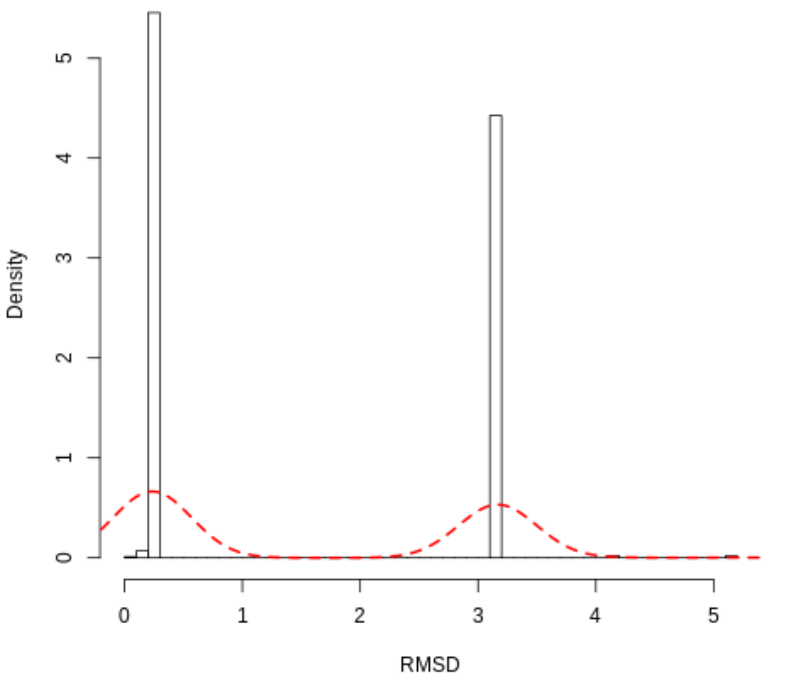


Omicron RBM

Molecular Dynamics of the receptor binding motif of wildtype, Delta and Omicron variants of SARS CoV-2 spike protein

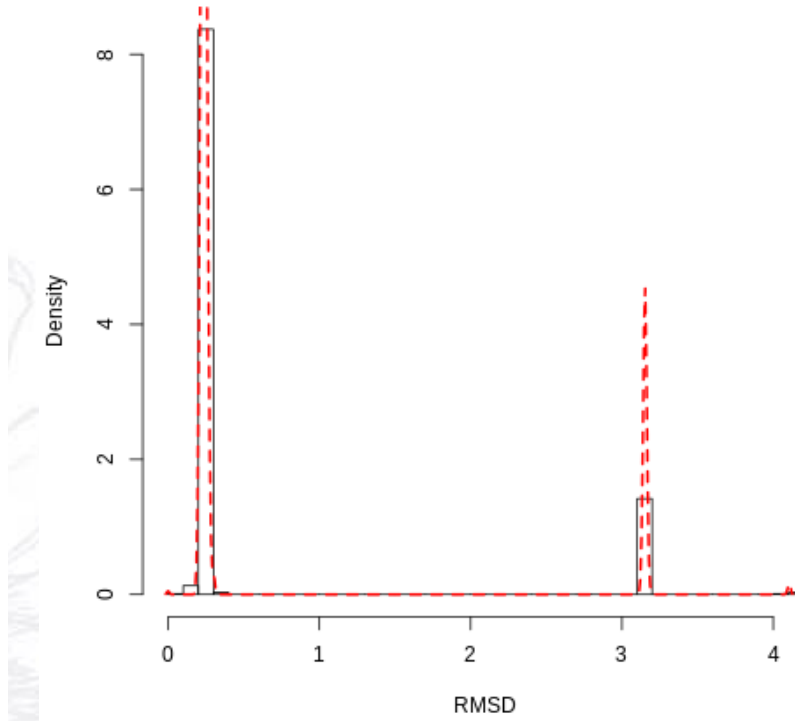


RMSD Histogram



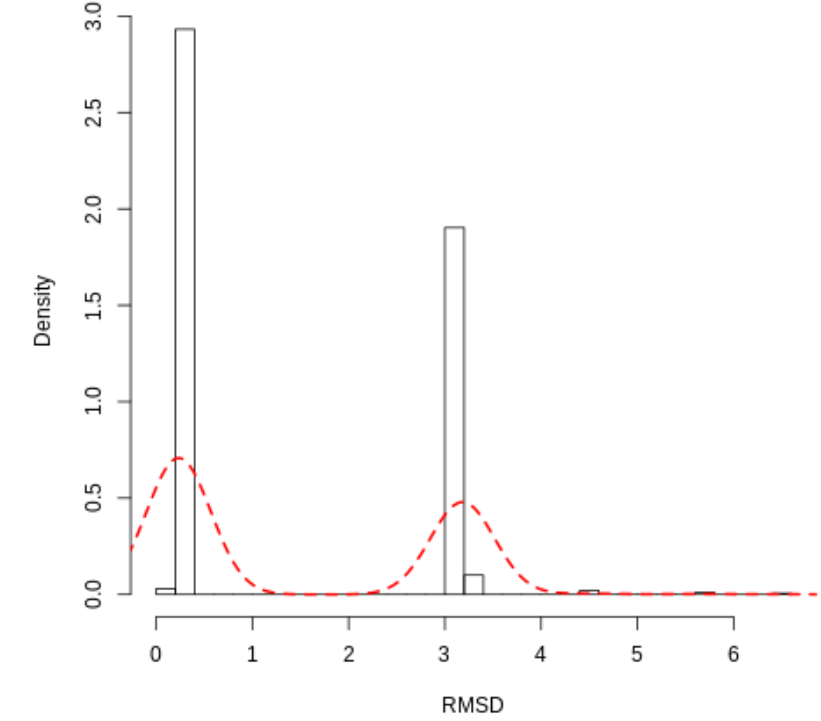
Wildtype RBM

RMSD Histogram



Delta RBM

RMSD Histogram

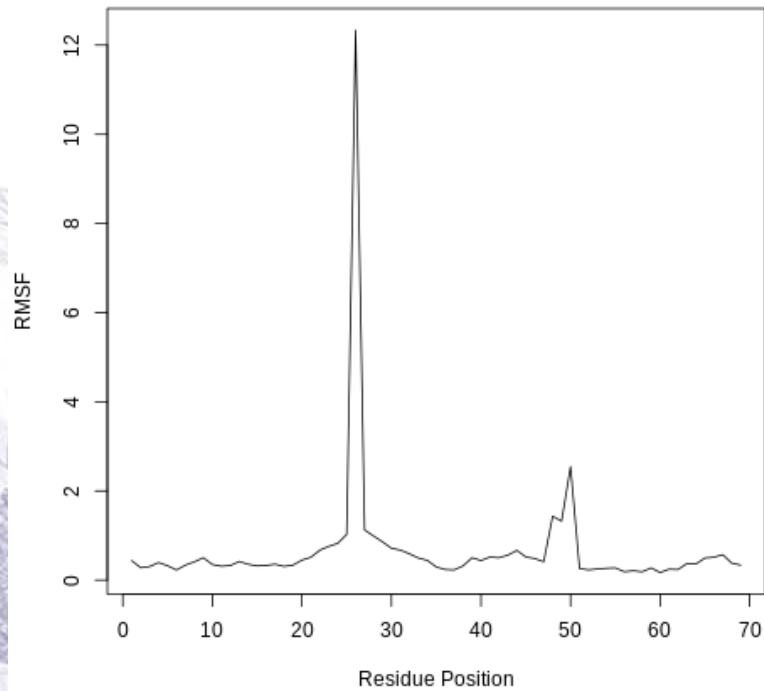


Omicron RBM

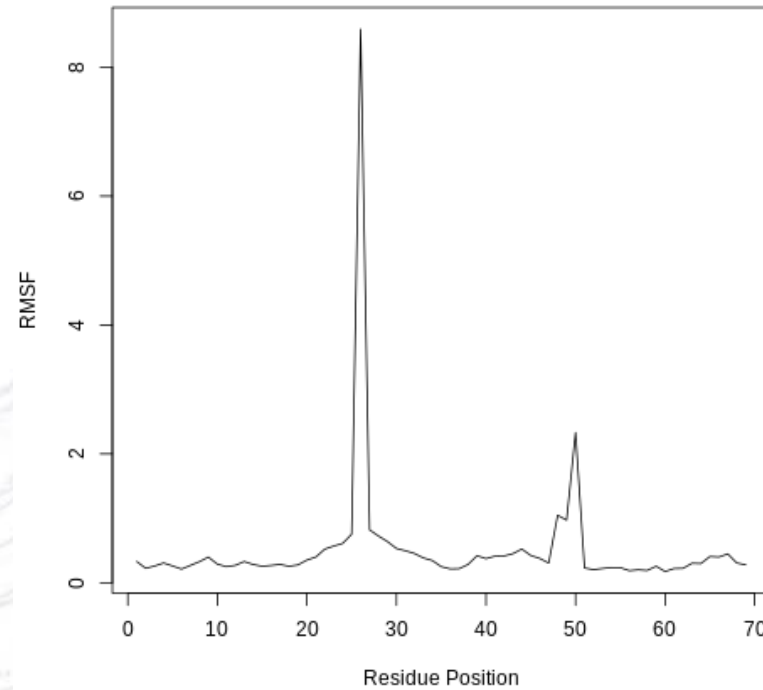
Molecular Dynamics of the receptor binding motif of wildtype, Delta and Omicron variants of SARS CoV-2 spike protein



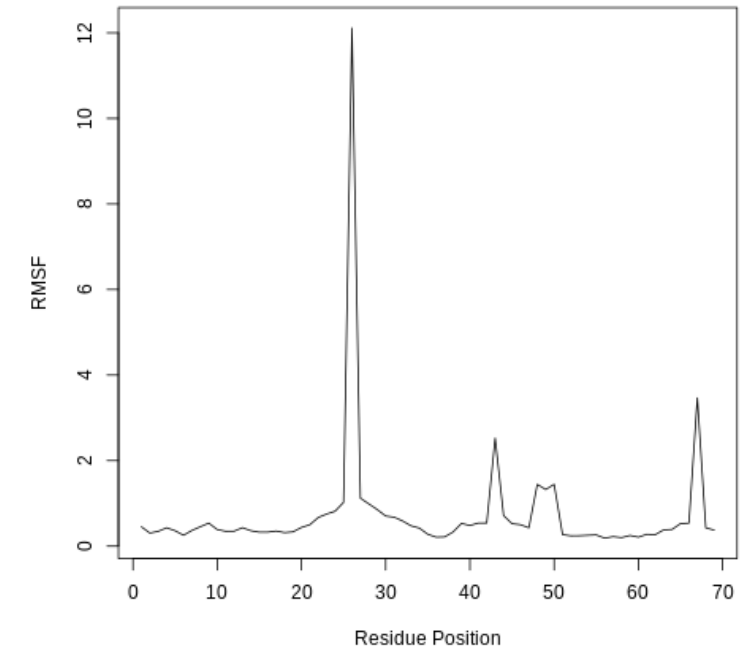
UNIVERSITY of the
WESTERN CAPE



Wildtype RBM



Delta RBM

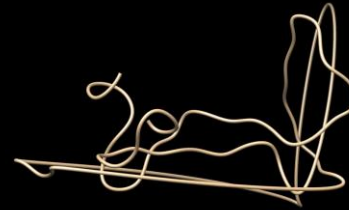


Omicron RBM

Molecular Dynamics of the receptor binding motif of wildtype, Delta and Omicron variants of SARS CoV-2 spike protein



Wildtype RBM

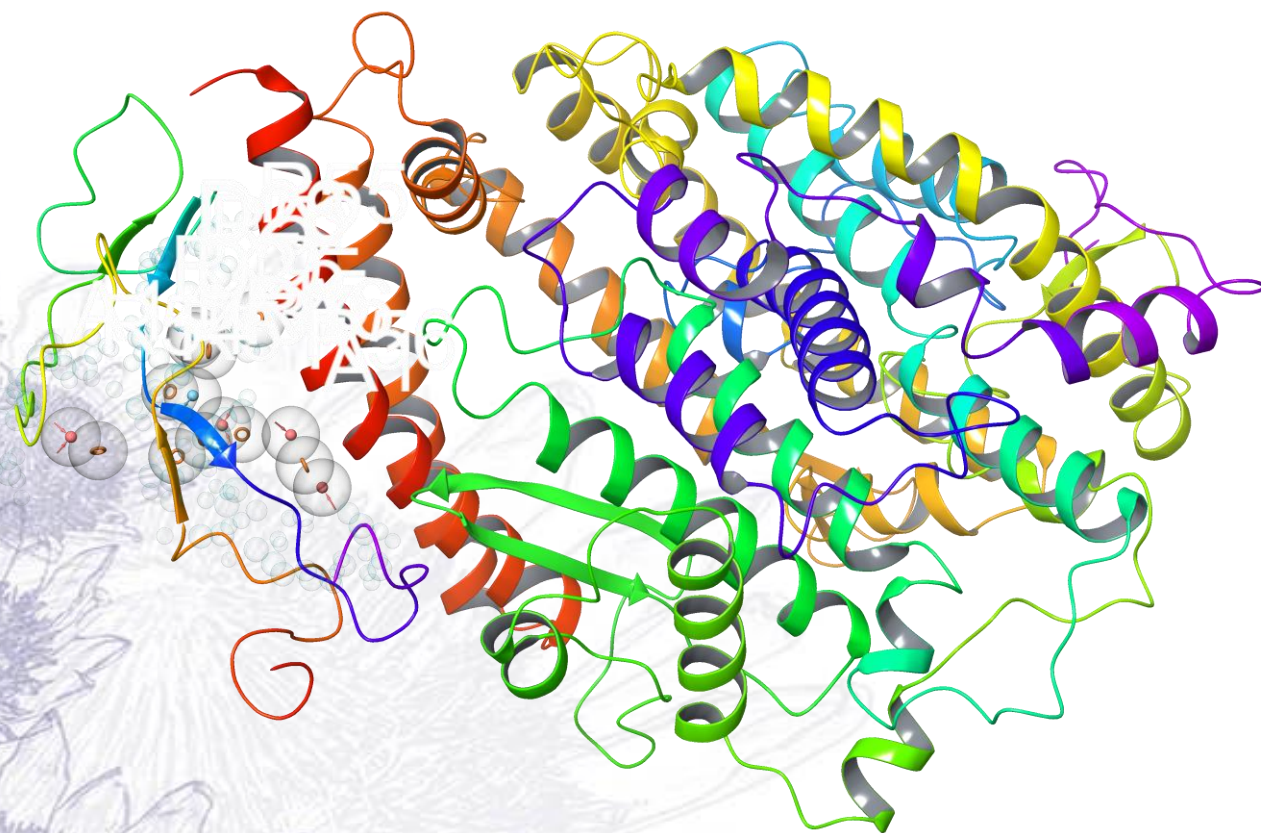


Delta RBM



Omicron RBM

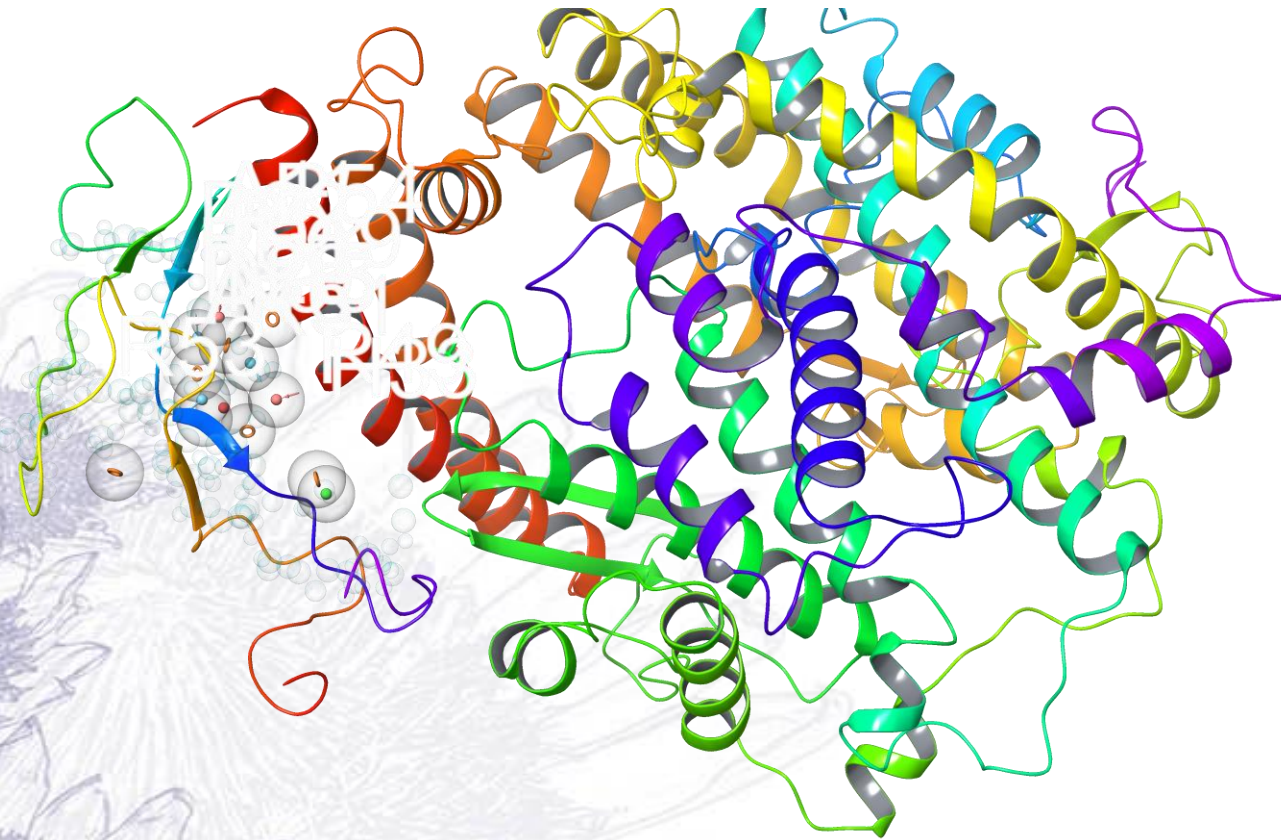
Pharmacophore model of wildtype SARS CoV-2 spike protein



Rank	Feature_label	source
1	R2291	HBond+PhobEn
2	R2148	RingChemscoreHphobe
3	R2111	RingChemscoreHphobe
4	R2297	RingChemscoreHphobe
5	A449	HBond
6	A88	HBond
7	D933	HBond
8	D934	HBond
9	N1570	HBond
10	R2287	HBond
11	R2151	RingChemscoreHphobe
12	A418	HBond
13	R2142	RingChemscoreHphobe
14	D967	HBond
15	A16	HBond

Wildtype RBM

Pharmacophore model of Delta variants of SARS CoV-2 spike protein



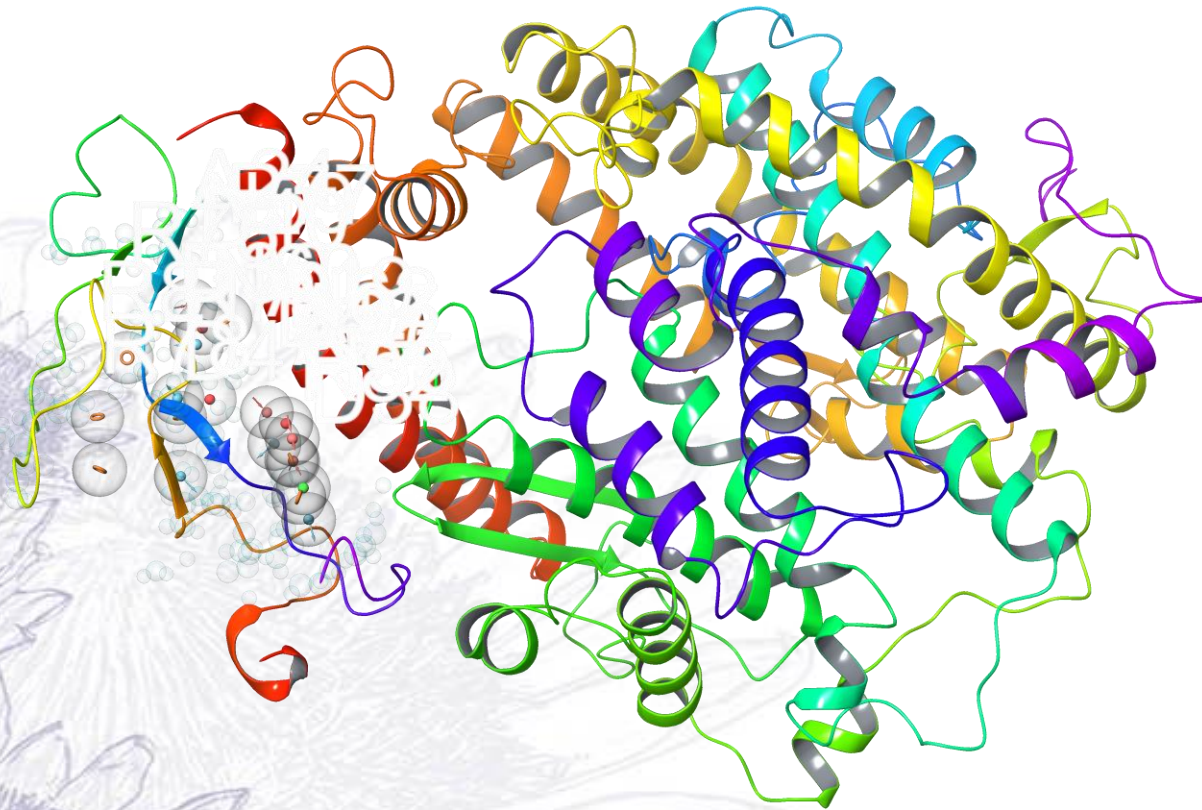
Rank	Feature_label	source
1	N1589	HBond
2	R2264	RingChemscoreHphobe
3	H1454	HBond+PhobEn
4	R2282	RingChemscoreHphobe
5	R2186	RingChemscoreHphobe
6	R1945	RingChemscoreHphobe
7	R2331	RingChemscoreHphobe
8	A142	HBond
9	D1015	HBond
10	D1005	HBond
11	A609	HBond
12	R2188	RingChemscoreHphobe
13	D1021	HBond
14	A544	HBond

Delta RBM

Pharmacophore model of Omicron variants of SARS CoV-2 spike protein



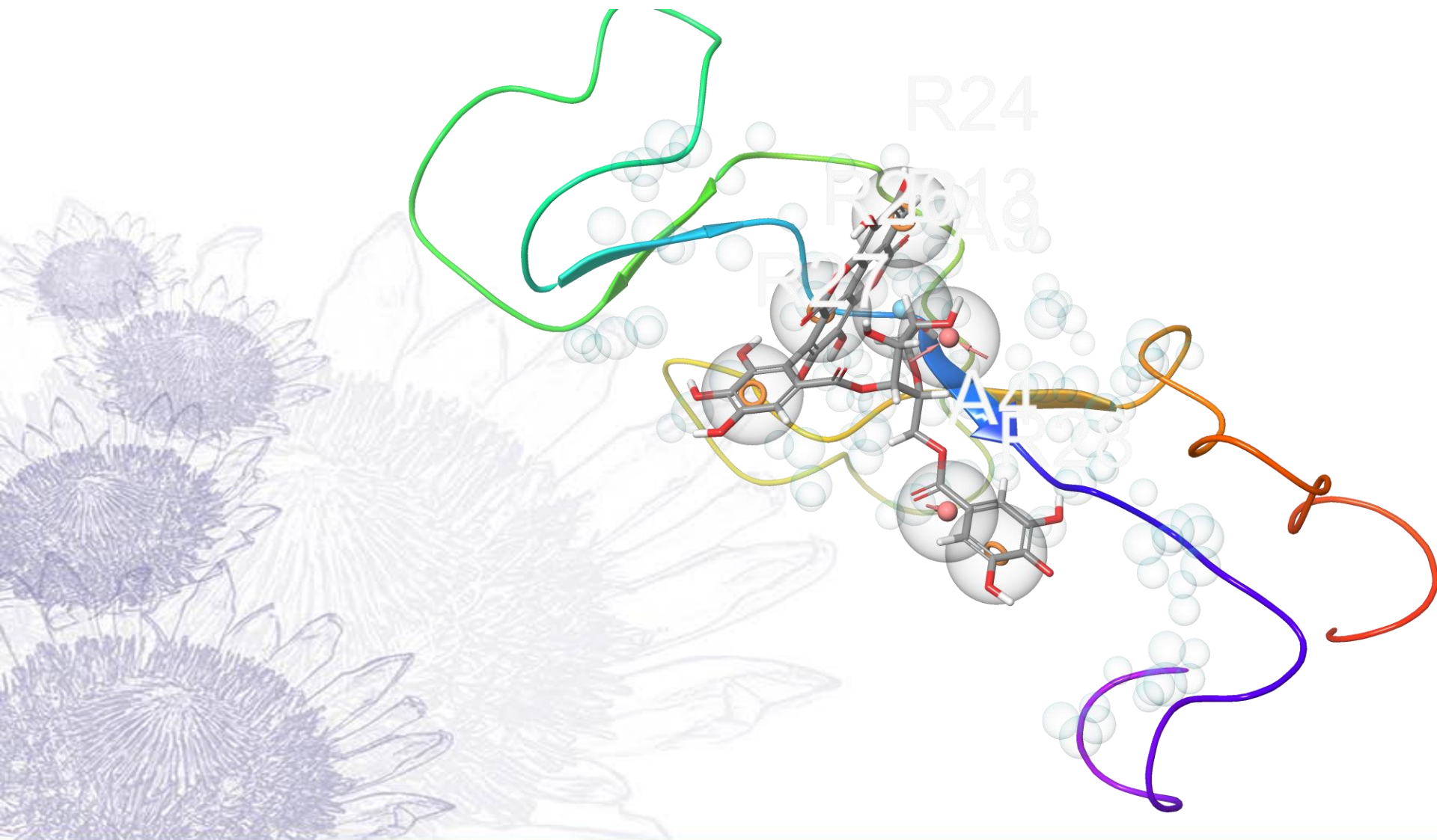
UNIVERSITY of the
WESTERN CAPE



Omicron RBM

Rank	Feature_label	source
1	R2188	HBond+PhobEnPairHB
2	D933	HBond+PhobEnHB
3	N1570	HBond
4	N1568	HBond
5	R2254	RingChemscoreHphobe
6	R2153	RingChemscoreHphobe
7	R2082	RingChemscoreHphobe
8	R2175	RingChemscoreHphobe
9	A532	HBond
10	A522	HBond
11	D996	HBond
12	D942	HBond
13	D1010	HBond
14	D911	HBond
15	R2162	RingChemscoreHphobe
16	N1588	Electro+HBond
17	A510	HBond
18	H1387	PhobEn
19	R2239	RingChemscoreHphobe
20	A581	HBond

Pharmacophore model screening



Conclusions

- Mutations affects dynamics of the interaction of the receptor binding motif of the spike protein with its host receptor (hACE2)
- Characterization revealed significant differences in 3D structures of the wildtype and variant forms of the receptor binding motif of the Spike protein
- Pharmacophore model generated for the wildtype and variant forms of the receptor binding motif of the Spike protein
- Virtual screening of natural product database with pharmacophore models identify potential fusion inhibitors.